

WALSH RES DOORS EBONY ULTIMATE

Quote #: L6HLU5C

A Proposal for Window and Door Products prepared for:

Shipping Address:

ERVIN ARCHITECTURAL PRODUCTS
1255 CAROLINA RD
SUFFOLK, VA 23434-8729

Project Description:

DR5 SPEC'd 16' x 8'8" - DRAWN AS 20' x 8'8".

Featuring products from:



ERVIN ARCHITECTURAL PRODUCTS
PO BOX 2715
VIRGINIA BEACH, VA 23450-2715
Phone: (757) 427-2929

This report was generated on 8/17/2021 11:25:05 AM using the Marvin Order Management System, version 0003.09.00 (Current). Price in USD. Unit availability and price are subject to change. Dealer terms and conditions may apply.

UNIT SUMMARY

The following is a schedule of the windows and doors for this project. For additional unit details, please see Line Item Quotes.

Additional charges, tax or Terms and Conditions may apply. Detail pricing is per unit.

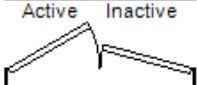
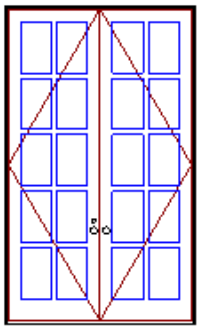
NUMBER OF LINES: 10	TOTAL UNIT QTY: 10	EXT NET PRICE: USD	88,113.08
---------------------	--------------------	--------------------	-----------

LINE	MARK UNIT	PRODUCT LINE	ITEM	NET PRICE	QTY	EXTENDED NET PRICE
1	DR1	Ultimate	Inswing French Door 2 1/4 Inch G2 CN 60100 RO 73 5/8" X 122 1/2"	9,269.35	1	9,269.35
2	M - DR1 TSM	Ultimate	Direct Glaze Rectangle RO 73 5/8" X 84"	2,744.50	1	2,744.50
3	DR4	Ultimate	Bi-Fold Door CN 12090 RO 145 13/16" X 107 25/32" Total RO:	17,410.33	1	17,410.33
4	DR5	Ultimate	Bi-Fold Door CN 18090 RO 216 9/32" X 107 25/32" Total RO:	32,834.40	1	32,834.40
5	DR6	Ultimate	Outswing French Door G2 CN 6080 RO 73 5/8" X 98 1/2"	5,358.83	1	5,358.83
6	DR7	Ultimate	Inswing French Door G2 CN 3080 RO 38 7/16" X 98 1/2"	3,993.63	1	3,993.63
7	DR8	Ultimate	Sliding French Door CN 6080 RO 73 5/8" X 96"	4,225.75	1	4,225.75
8	DR9	Ultimate	Sliding French Door CN 12080 RO 144" X 96"	8,143.34	1	8,143.34
9	DR2 - GARAGE MAN DOOR	Non-Marvin	Materials EXT Single Door 36" x 96" S82610-FF-LE (Clear), 6 9/16" On-Guard Primed, Left Hand Inswing, Black Nickel Ball Bearing Hinges, Bronze Finish w Dark Cap Composite Adjustable Sill, Bronze Compression Weatherstripping, Black Nickel Heirloom Narrow Multi-Point Lock, Strike Prep, 4 Block Dentil Shelf	2,284.19	1	2,284.19
10	DR3 - POOL EQUIP	Non-Marvin	Materials EXT Single Door 36" x 96" S81000 , 6 9/16" On-Guard Primed, Right Hand Outswing, Black Nickel NRP Hinges, Bronze Finish w Dark Cap Composite Outswing Sill, Bronze Compression Weatherstripping, Black Nickel Heirloom Narrow Multi-Point Lock, Strike Prep	1,848.76	1	1,848.76

LINE ITEM QUOTES

The following is a schedule of the windows and doors for this project. For additional unit details, please see Line Item Quotes. Additional charges, tax or Terms and Conditions may apply. Detail pricing is per unit.

Line #1	Mark Unit: DR1	Net Price:		9,269.35
Qty: 1		Ext. Net Price:	USD	9,269.35



As Viewed From The Exterior

CN 60100

RO 73 5/8" X 122 1/2"

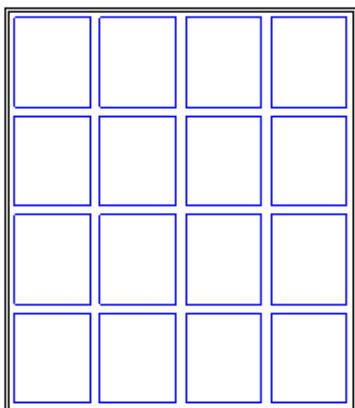
Egress Information

Width: 65 3/16" Height: 118 11/32"

Net Clear Opening: 53.57 SqFt

Ebony Clad Exterior
Painted Interior Finish - Designer Black - Pine Interior
Ultimate Inswing French Door 2 1/4 Inch G2 6 9/16" - XX Left Hand
CN 60100
Knocked Down
**Operator Panels Ship Separate
Tempered Low E2 w/Argon
Black Perimeter and Spacer Bar
1 15/16" SDL - With Spacer Bar - Black
Rectangular - Special Cut 2W5H
Ebony Clad Ext - Painted Interior Finish - Designer Black - Pine Int
Ogee Interior Glazing Profile
Traditional Lever(s)
Multi-Point Lock on Active Panel
Matte Black Active Exterior Handle Set on Active Panel Keyed
Matte Black Active Interior Handle Set on Active Panel
Keyed Alike
Keyed Alike Group 1
Multi-Point Lock on Inactive Panel
Matte Black Inactive Exterior Handle Set on Inactive Panel
Matte Black Inactive Interior Handle Set on Inactive Panel
Matte Black Adjustable Hinges 5 Per Panel-
Bronze Ultrex Sill
Black Weather Strip
6 9/16" Jambs
Thru Jamb Installation w/ Nailing Fin
***Note: Unit Availability and Price is Subject to Change

Line #2	Mark Unit: M - DR1 TSM	Net Price:		2,744.50
Qty: 1		Ext. Net Price:	USD	2,744.50



As Viewed From The Exterior

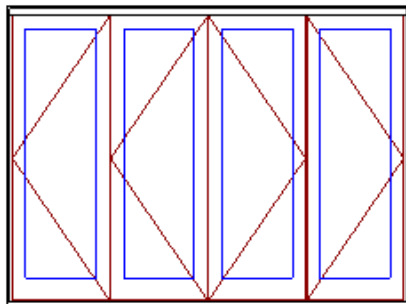
RO 73 5/8" X 84"

Egress Information

No Egress Information available.

Ebony Clad Exterior
Painted Interior Finish - Designer Black - Pine Interior
Ultimate Direct Glaze Rectangle
1/4" Low E2 w/Argon
Black Perimeter and Spacer Bar
1 15/16" SDL - With Spacer Bar - Black
Rectangular - Special Cut 4W4H
Ebony Clad Ext - Painted Interior Finish - Designer Black - Pine Int
4 9/16" Jambs
Nailing Fin
***Note: Unit Availability and Price is Subject to Change

Line #3	Mark Unit: DR4	Net Price:		17,410.33
Qty: 1		Ext. Net Price:	USD	17,410.33



As Viewed From The Exterior

CN 12090

RO 145 13/16" X 107 25/32"

Egress Information

No Egress Information available.

Ebony Clad Exterior
 Painted Interior Finish - Designer Black - Pine Interior
 Ultimate Bi-Fold Door - 2L2R
 CN 12090
The header deflection cannot exceed 1/8" fully loaded.
Not accessible from the exterior.
 Tempered Low E2 w/Argon
 Black Perimeter Bar
 Ogee Interior Glazing Profile
 Black Interior Weather Strip Package
 Black Exterior Weather Strip Package
 Matte Black Panel Handle
 Matte Black Hinges to Exterior
 Matte Black Hinges to Interior
 Bronze Anodized Aluminum Low Profile Sill
 Black Weather Strip

5 9/16" Jambs

Nailing Fin

***Note: Reference the Ultimate Bi-Fold Door Site Prep Handbook for construction guidelines.

***Note: Reference the Bi-Fold Door Field Calculations for non-standard size unit calculations and when a screen is included.

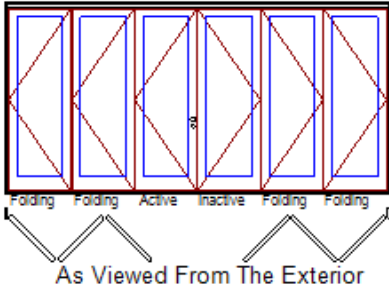
***Note: Product is shipped Knocked Down (KD).

***Note: The selected sill is Non-Performance Rated / Non-Certified.

***Note: Unit Availability and Price is Subject to Change

Line #4	Mark Unit: DR5	Net Price:		32,834.40
Qty: 1		Ext. Net Price:	USD	32,834.40

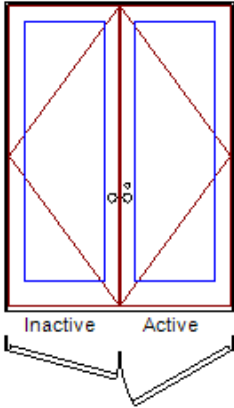
MARVIN 



CN 18090
RO 216 9/32" X 107 25/32"
Egress Information
Width: 31 3/16" Height: 102 21/64"
Net Clear Opening: 22.16 SqFt

Ebony Clad Exterior
Painted Interior Finish - Designer Black - Pine Interior
Ultimate Bi-Fold Door - 3L3R Left Hand
CN 18090
The header deflection cannot exceed 1/8" fully loaded.
Tempered Low E2 w/Argon
Black Perimeter Bar
Ogee Interior Glazing Profile
Black Interior Weather Strip Package
Black Exterior Weather Strip Package
Traditional Lever(s)
Multi-Point Lock on Active Panel
Matte Black Active Exterior Handle Set on Active Panel
Matte Black Active Interior Handle Set on Active Panel
Keyed Alike
Keyed Alike Group 1
Flush Bolt on Inactive Panel
No Handle Set on Inactive Panel
Matte Black Panel Handle
Matte Black Hinges to Exterior
Matte Black Hinges to Interior
Interior Retractable Screen SE4
Screen Frame OM 218 11/16" X 107 15/32"
Screen Frame Width Outside Measurement is intended to exceed the Door Rough Opening Width.
Black Surround
Black Handle Pull
Charcoal Mesh
Bi Parting Operation
Black Aluminum Screen Sill
***Screen/Combo Ship Loose
Bronze Anodized Aluminum Low Profile Sill
Black Weather Strip
5 9/16" Jambs
Nailing Fin
***Note: Reference the Ultimate Bi-Fold Door Site Prep Handbook for construction guidelines.
***Note: Reference the Bi-Fold Door Field Calculations for non-standard size unit calculations and when a screen is included.
***Note: Product is shipped Knocked Down (KD).
***Note: The selected sill is Non-Performance Rated / Non-Certified.
***Note: Unit Availability and Price is Subject to Change

Line #5	Mark Unit: DR6	Net Price:		5,358.83
Qty: 1		Ext. Net Price:	USD	5,358.83



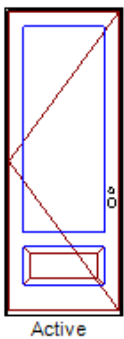
CN 6080
RO 73 5/8" X 98 1/2"
Egress Information
Width: 63 47/64" Height: 94 1/4"
Net Clear Opening: 41.71 SqFt

Ebony Clad Exterior
Painted Interior Finish - Designer Black - Pine Interior
Ultimate Outswing French Door G2 4 9/16" - XX Left Hand
CN 6080

Tempered Low E2 w/Argon
Black Perimeter Bar
Ogee Interior Glazing Profile
Traditional Lever(s)
Multi-Point Lock on Active Panel
Matte Black Active Exterior Handle Set on Active Panel Keyed
Matte Black Active Interior Handle Set on Active Panel
Keyed Alike
Keyed Alike Group 1
Multi-Point Lock on Inactive Panel
Matte Black Inactive Exterior Handle Set on Inactive Panel
Matte Black Inactive Interior Handle Set on Inactive Panel
Matte Black Adjustable Hinges 3 Per Panel-
Bronze Ultrex Sill
Black Weather Strip

4 9/16" Jamb
Thru Jamb Installation w/ Nailing Fin
Skid Plate Applied
***Note: Unit Availability and Price is Subject to Change

Line #6	Mark Unit: DR7	Net Price:		3,993.63
Qty: 1		Ext. Net Price:	USD	3,993.63



CN 3080
RO 38 7/16" X 98 1/2"
Egress Information
Width: 32 1/16" Height: 94 11/32"
Net Clear Opening: 21.01 SqFt

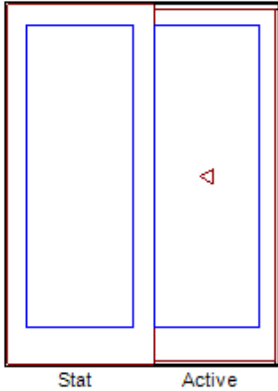
Ebony Clad Exterior
Painted Interior Finish - Designer Black - Pine Interior
Ultimate Inswing French Door G2 4 9/16" - X Left Hand
CN 3080

Tempered Obscure
Black Perimeter Bar
Ogee Interior Glazing Profile
Stamped Raised Panel Visible Panel Height 12 1/64"
Traditional Lever(s)
Multi-Point Lock on Active Panel
Matte Black Active Exterior Handle Set on Active Panel Keyed
Matte Black Active Interior Handle Set on Active Panel
Keyed Alike
Keyed Alike Group 1
Matte Black Adjustable Hinges 3 Per Panel-
Bronze Ultrex Sill
Black Weather Strip

4 9/16" Jamb
Thru Jamb Installation w/ Nailing Fin
Skid Plate Applied
***Note: Unit Availability and Price is Subject to Change

Line #7	Mark Unit: DR8	Net Price:		4,225.75
Qty: 1		Ext. Net Price:	USD	4,225.75

MARVIN 



As Viewed From The Exterior

CN 6080

RO 73 5/8" X 96"

Egress Information

Width: 28 1/2" Height: 91 3/32"

Net Clear Opening: 18.03 SqFt

Ebony Clad Exterior
Painted Interior Finish - Designer Black - Pine Interior
Ultimate Sliding French Door - OX
CN 6080

Tempered Low E2 w/Argon

Black Perimeter Bar

Ogee Interior Glazing Profile

Traditional Handle(s)

2 Point Multi-Point Lock on Active Panel

Matte Black Active Exterior Handle Set on Active Panel Keyed

Matte Black Active Interior Handle Set on Active Panel

Keyed Alike

Keyed Alike Group 1

Coastal Sliding Door Rollers

Exterior Ultimate Sliding Screen

Ebony Surround

Charcoal Fiberglass Mesh

***Screen/Combo Ship Loose

Std Ultrex Sill

Bronze Ultrex Sill

Black Weather Strip

Bare Oak Sill Liner

Wood Sill Liners will not have an interior pre finish.

4 9/16" Jambs

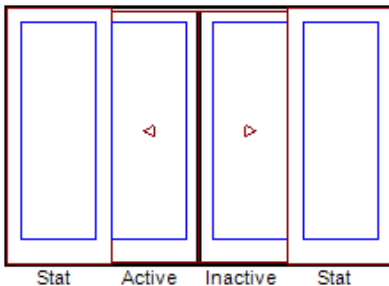
Nailing Fin

Skid Plate Applied

***Note: Unit Availability and Price is Subject to Change

Line #8	Mark Unit: DR9	Net Price:		8,143.34
Qty: 1		Ext. Net Price:	USD	8,143.34

MARVIN 



As Viewed From The Exterior

CN 12080

RO 144" X 96"

Egress Information

Width: 57 15/32" Height: 91 3/32"

Net Clear Opening: 36.35 SqFt

Ebony Clad Exterior
Painted Interior Finish - Designer Black - Pine Interior
Ultimate Sliding French Door - OXXO Left Hand
CN 12080

**Operator Panels Ship Separate

Tempered Low E2 w/Argon

Black Perimeter Bar

Ogee Interior Glazing Profile

Traditional Handle(s)

2 Point Multi-Point Lock on Active Panel

Matte Black Active Exterior Handle Set on Active Panel Keyed

Matte Black Active Interior Handle Set on Active Panel

Keyed Alike - Keyed Alike Group 1

Matte Black Inactive Exterior Handle Set on Inactive Panel

Matte Black Inactive Interior Handle Set on Inactive Panel

Coastal Sliding Door Rollers

High Performance Option

Exterior Ultimate Sliding Screen

Ebony Surround

Charcoal Fiberglass Mesh

***Screen/Combo Ship Loose

High Performance Ultrex Sill

Bronze Ultrex Sill

Black Weather Strip

Bare Oak Sill Liner

Wood Sill Liners will not have an interior pre finish.

4 9/16" Jambs

Nailing Fin

Skid Plate Applied

***Note: Unit Availability and Price is Subject to Change

Line #9	Mark Unit: DR2 - GARAGE MAN DOOR	Net Price:		2,284.19
Qty: 1		Ext. Net Price:	USD	2,284.19

Materials EXT Single Door 36" x 96" S82610-FF-LE (Clear), 6 9/16" On-Guard Primed, Left Hand Inswing, Black Nickel Ball Bearing Hinges, Bronze Finish w Dark Cap Composite Adjustable Sill, Bronze Compression Weatherstripping, Black Nickel Heirloom Narrow Multi-Point Lock, Strike Prep, 4 Block Dentil Shelf

Line #10	Mark Unit: DR3 - POOL EQUIP	Net Price:		1,848.76
Qty: 1		Ext. Net Price:	USD	1,848.76

Materials EXT Single Door 36" x 96" S81000 , 6 9/16" On-Guard Primed, Right Hand Outswing, Black Nickel NRP Hinges, Bronze Finish w Dark Cap Composite Outswing Sill, Bronze Compression Weatherstripping, Black Nickel Heirloom Narrow Multi-Point Lock, Strike Prep

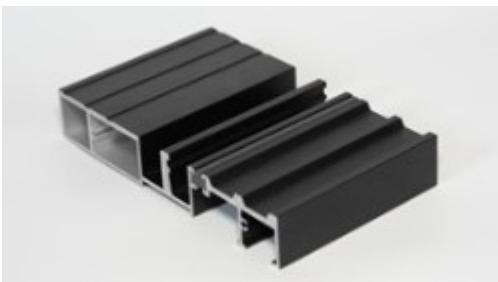
Project Subtotal Net Price: USD		83,980.13
Taxable Materials: USD		4,132.95
6.000% Sales Tax: USD		5,286.78
Project Total Net Price: USD		93,399.86

TERMS AND CONDITIONS

- All Marvin Pricing Valid for 30 days.
- All custom - Requires 50% Deposit at time of order placement / Shop drawing approval.
- All Pricing is for material only unless otherwise stated.
- While we have done our best to quote this project accurately, it is your responsibility to determine that we have quoted what you and your customer want including suitability, Local Code Compliance, and fitness for purpose.
- Review this order carefully. Marvin product is made to order and is not returnable. We cannot accept changes/cancellations after your order has been signed off on and released into production.
- We cannot release and order unless this sheet is signed, dated, and returned to Ervin Architectural Products along with deposit.

Door Sill Limitations

Low Profile Sill - The selected sill is Non-Performance Rated / Non- Certified



PURCHASE APPROVAL/SIGN OFF

Project Subtotal Net Price: USD	83,980.13
Taxable Materials: USD	4,132.95
6.000% Sales Tax: USD	5,286.78
Project Total Net Price: USD	93,399.86

I have reviewed all line item quotes in detail and agree that the product specifications and pricing are accurate, and I approve the project for order. I acknowledge that additional charges, tax or Terms and Conditions may apply.

Buyer: _____

• Installation Option - \$ 4,150.00

• INSTALLATION OF DOOR UNITS AS LISTED IN QUOTE #L6HLU5C-DATED 8-17-21; ALL UNITS SHALL BE INSTALLED AS PER MANUFACTURERS WRITTEN INSTRUCTIONS AND BY FACTORY TRAINED / INSTALLATION MASTERS CERTIFIED INSTALLERS, METHOD "A1" INSTALLATION., ALL FLASHING MATERIALS INCLUDED COMPLY WITH ASTM E2112-01, SECTION 5.13. (6" BUTYL FLASHING TAPE & FLEX TAPE SILLS, CAULK, LOW EXPANSION FOAM, SHIMS & FASTENERS).

• ANY ALTERATION TO OPEINGS NEEDED TO ALLOW FOR PROPER INSTALLATION OF WINDOW/DOOR PRODUCTS WILL BE HANDLED ON A TIME AND MATERIALS BASIS WITH PRIOR APPROVAL FROM GC. INSTALLERS SHALL CLEAN UP AND DISPOSE OF INSTALLATION RELATED DEBRIS (GC PROVIDED DUMPSTER).

Buyer: _____