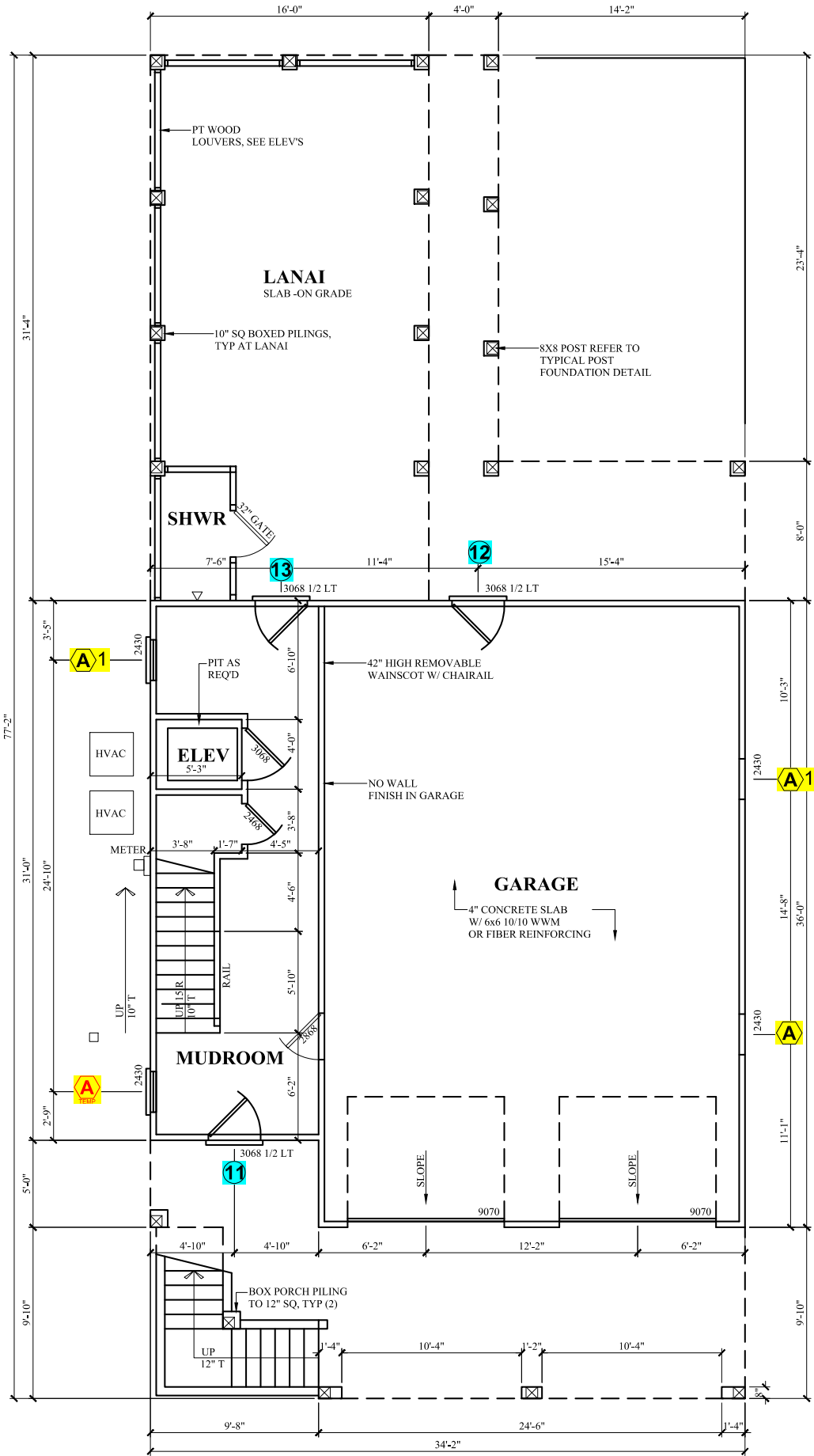


PLAN NOTES

1. PROVIDE FIRE BLOCKING PER IRC R302.11; FIREBLOCKING SHALL BE PROVIDED TO CUT-OFF ALL CONCEALED DRAFT OPENINGS (BOTH VERTICAL AND HORIZONTAL) AND FORM AN EFFECTIVE FIRE BARRIER BETWEEN STORIES, AND BETWEEN TOP STORY AND THE ROOF SPACE.
2. PROVIDE DRAFTSTOPPING PER IRC R302.12; IN COMBUSTIBLE CONSTRUCTION WHERE THERE IS USABLE SPACE BOTH ABOVE AND BELOW THE CONCEALED SPACE OF A FLOOR/CEILING ASSEMBLY, DRAFTSTOPS SHALL BE INSTALLED SO THAT THE AREA OF THE CONCEALED SPACE DOES NOT EXCEED 1,000 SQUARE FEET (92.9 M2). DRAFTSTOPPING SHALL DIVIDE THE CONCEALED SPACE INTO APPROXIMATELY EQUAL AREAS. WHERE THE ASSEMBLY IS ENCLOSED BY A FLOOR MEMBRANE ABOVE AND A CEILING MEMBRANE BELOW, DRAFTSTOPPING SHALL BE PROVIDED IN FLOOR/CEILING ASSEMBLIES UNDER THE FOLLOWING CIRCUMSTANCES:
1. CEILING IS SUSPENDED UNDER THE FLOOR FRAMING.
2. FLOOR FRAMING IS CONSTRUCTED OF TRUSS-TYPE OPEN-WEB OR PERFORATED MEMBERS.
3. THE GLAZING FENESTRATION U-FACTOR SHALL COMPLY WITH N1101.12.3 AND TABLE N1102.1.1 WHICH IS (U-FACTOR=35)
4. ATTIC ACCESS SHALL BE SEALED WITH A GASKET AND AN R-49 INSULATION, SEE N1102.2.4.
5. PROVIDE ONE SMOKE DETECTOR IN EACH BEDROOM. PROVIDE ONE SMOKE DETECTOR OUTSIDE EACH BEDROOM AND WITHIN 3' OF EACH BEDROOM ENTRY DOOR. SMOKE DETECTORS SHALL BE LISTED IN ACCORDANCE WITH UL 217 AND SHALL BE INTERCONNECTED.
6. CARBON MONOXIDE ALARMS MUST BE INSTALLED OUTSIDE EACH SLEEPING AREA AND LISTED IN ACCORDANCE WITH UL 2034.
7. GAPS IN ALL WALL CORNERS AND GAPS IN HEADERS SHALL BE INSULATED TO A MINIMUM OF R-3.
8. BATHROOM AND SHOWER FLOOR AND WALLS ABOVE BATHTUB WITH INSTALLED SHOWER FLOOR HEADS AND IN SHOWER COMPARTMENTS SHALL BE FRAMED WITH A NONABSORBENT SURFACE. SUCH WALL SURFACES SHALL EXTEND TO A HEIGHT OF NOT LESS THAN 6 FEET ABOVE THE FLOOR SECTION R307.2.



Window Schedule		
Description	Quantity	
Mark A	2	
Mark A-Temp	2	
Mark A1	3	
Mark A2-6-Temp	1	
Mark A2-6	1	
Mark A6-Temp	1	
Mark A6	1	
Mark B	10	
Mark C6 Temp	1	
Mark C	9	
Mark D	4	
Mark E	1	
Mark E Temp	2	
Mark F	1	
Mark F6	1	

GROUND FLOOR PLAN

- 1/4"=1'-0"
- NOTES:
- 1) 8'-0" TOP OF GIRDER
- 2) SEE ELEVATIONS FOR WINDOW HEAD HEIGHTS
- 3) DIMENSIONS ARE TO FRAMING
- 4) DOOR & WINDOW SIZE CLARIFICATION EXAMPLE:
2468 = 2'-4" x 6'-8" (NOMINAL SIZE)
- 5) CONTRACTOR TO VERIFY ELEVATOR R.O. REQUIREMENTS PRIOR TO CONSTRUCTION

CHARLOTTE MODEL

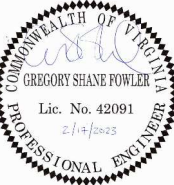
SIMPLDSGN®
Engineering Services
SIMPLE DESIGN, LLC
521 W. WASHINGTON STREET, SUITE 2
SUFFOLK, VIRGINIA 23434
PHONE: 757.809.3700
WWW.SIMPLDSGN.COM

REVISION	DATE
1	2/21/2023
2	3/1/2023
3	3/2/2023

CAPE CHARLES, VA 23310

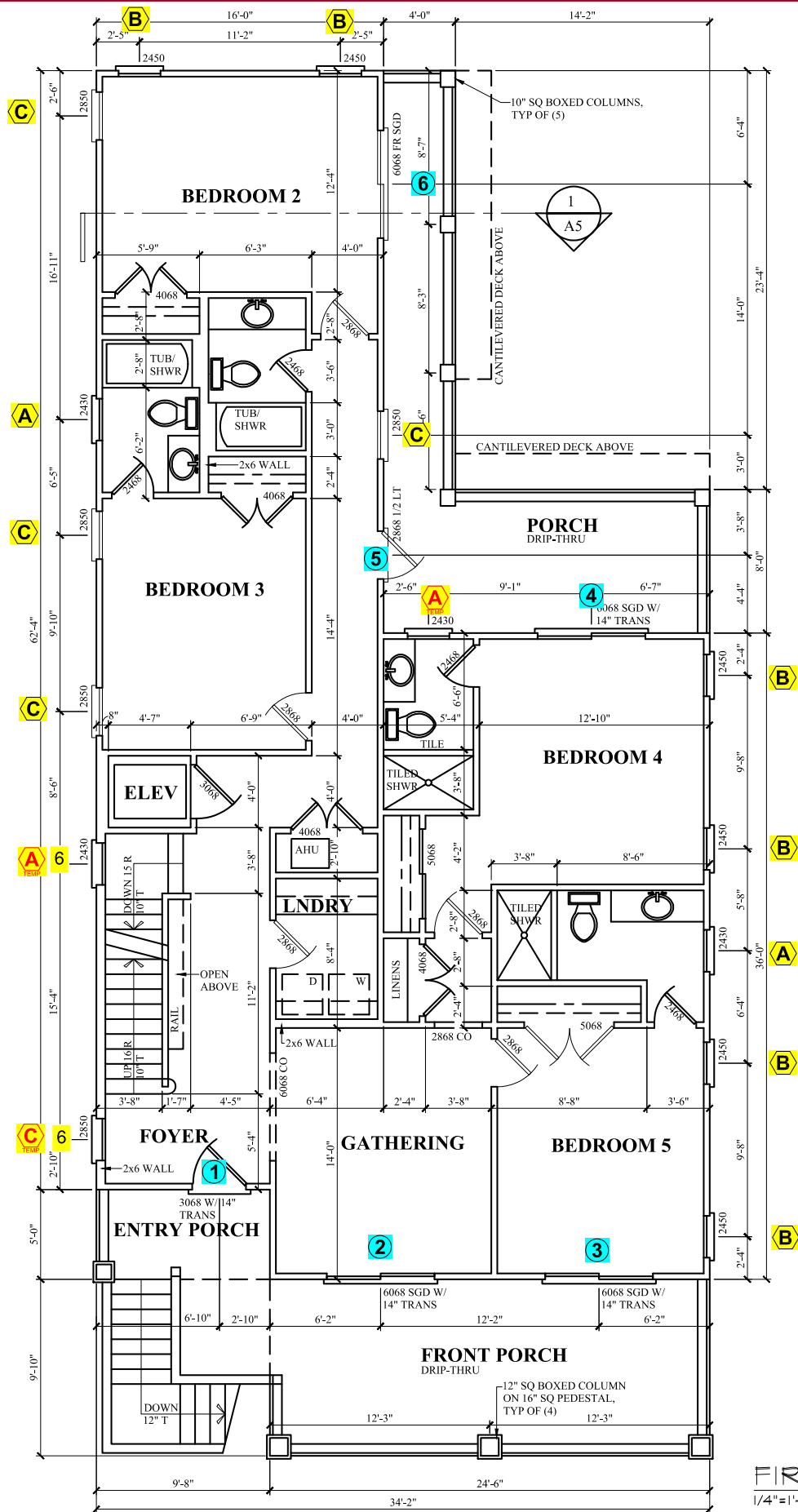
FLOOR PLANS

509 WALBRIDGE BEND



PROJ NO.	2735
DATE:	2/17/2023
SCALE:	AS SHOWN
CHECKED:	GSF
DRAWN BY:	JHBV

S-002

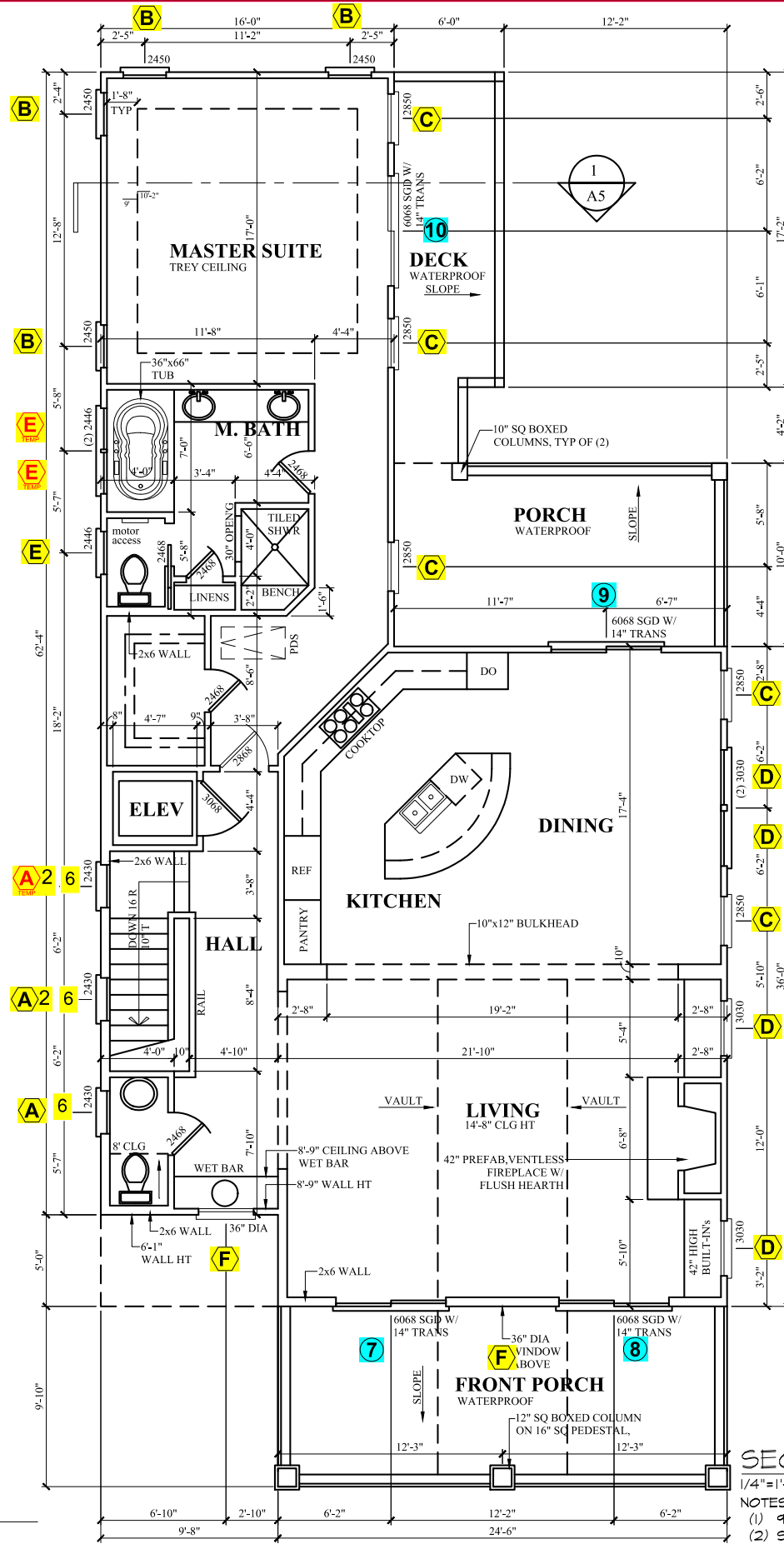


FIRST FLOOR PLAN

1/4"=1'-0"

NOTES:

- (1) 9' 1-1/2" PLATE HT
- (2) SEE ELEVATIONS FOR WINDOW HEAD HEIGHTS
- (3) DIMENSIONS ARE TO FRAMING
- (4) DOOR & WINDOW SIZE CLARIFICATION EXAMPLE:
2468 = 2'-4" x 6'-8" (NOMINAL SIZE)
- (5) CONTRACTOR TO VERIFY ELEVATOR R.O. REQUIREMENTS PRIOR TO CONSTRUCTION



SECOND FLOOR PLAN

1/4"=1'-0"

NOTES:

- (1) 9' 1-1/2" PLATE HT
- (2) SEE ELEVATIONS FOR WINDOW HEAD HEIGHTS
- (3) DIMENSIONS ARE TO FRAMING
- (4) PROVIDE (2) STUDS BETWEEN INDIVIDUAL WINDOW UNITS WHERE MULTIPLE UNITS ARE INDICATED
- (5) DOOR & WINDOW SIZE CLARIFICATION EXAMPLE:
2468 = 2'-4" x 6'-8" (NOMINAL SIZE)
- (6) CONTRACTOR TO VERIFY ELEVATOR R.O. REQUIREMENTS PRIOR TO CONSTRUCTION
- (7) POCKET DOOR WALLS ARE 2x6

SIMPLDGSN®

Engineering Services

SIMPLE DESIGN, LLC
521 W. WASHINGTON STREET, SUITE 2
SUFFOLK, VIRGINIA 23434
PHONE: 757.809.3700
WWW.SIMPLDGSN.COM

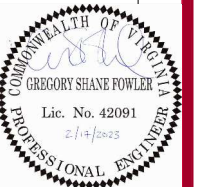
REVISION	DATE
1	2/21/2023
2	3/1/2023
3	3/2/2023

CHARLOTTE MODEL

FLOOR PLANS

509 WALBRIDGE BEND

CAPE CHARLES, VA 23310



PROJ NO.	2735
DATE:	2/17/2023
SCALE:	AS SHOWN
CHECKED:	GSF
DRAWN BY:	JHBV

S-003

SHEET 3 OF 18