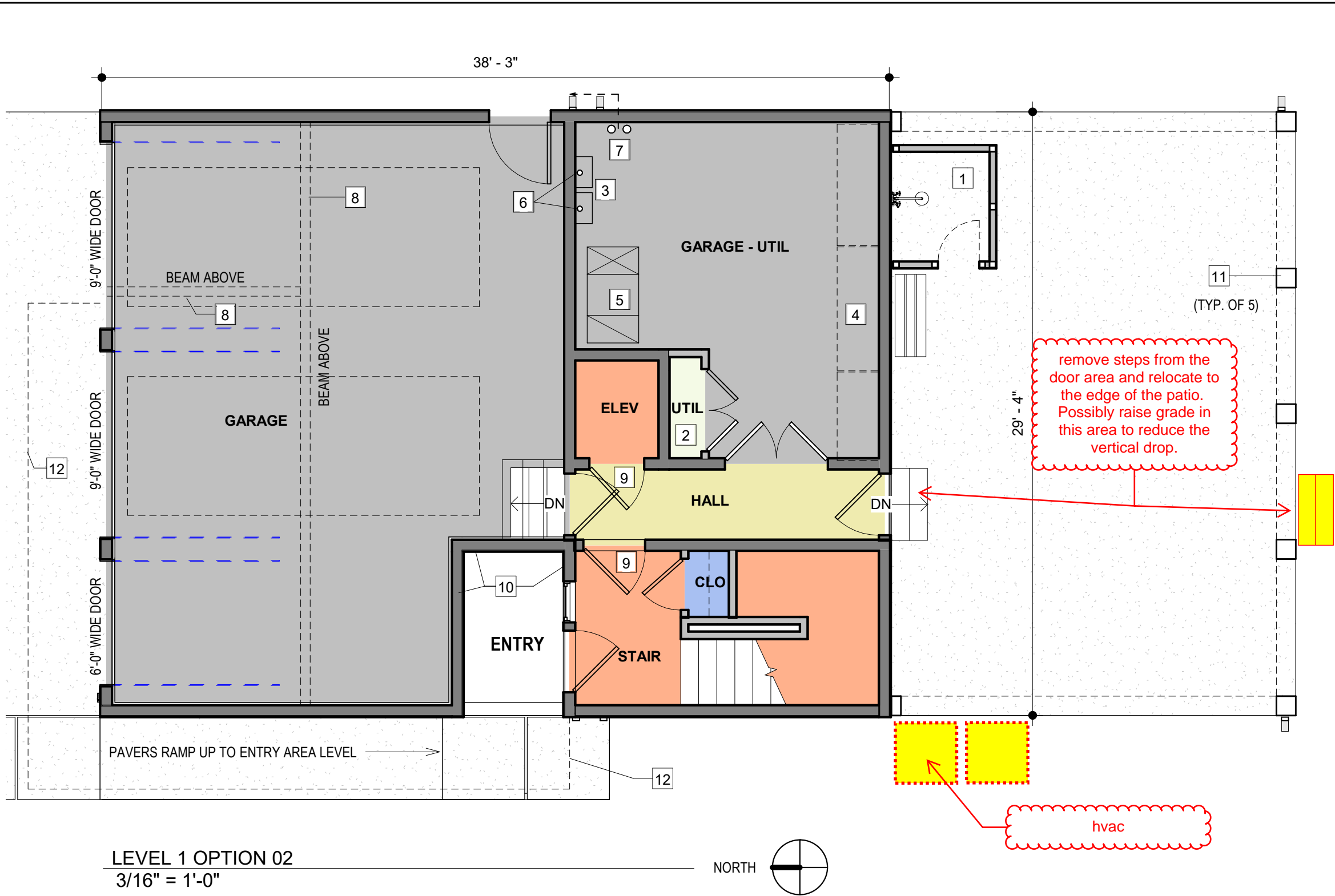


C:\Users\Greg Simon\Documents\1230A\2023-04 Quate Duplex-106 85th St\Revit files\2023-04_85th Street Duplex_FLIP KITCH - STUCCO-WORKING.rvt



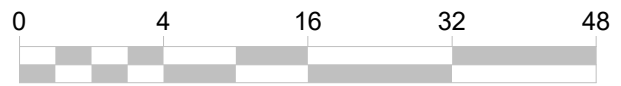
- NEW WORK NOTES OPT. 02**
FIRST FLOOR
- 1 ENCLOSED, OUTDOOR SHOWER AREA WITH WOOD BENCH
 - 2 UTILITY ROOM FOR ELEVATOR EQUIPMENT, CONTROL PANEL, AND ELECTRICAL DISCONNECT BOX.
 - 3 POSSIBLE LOCATION FOR A WALL MOUNTED, ON-DEMAND WATER HEATER. SUPPLY PIPES UP TO 2ND AND 3RD FLOORS
 - 4 FULL HEIGHT METAL STORAGE SHELVING
 - 5 HVAC UNIT FOR 2ND FLOOR. DUCT WORK WOULD RUN IN 2ND FLOOR TRUSS AREA WITH SUPPLY REGISTERS AT THE FLOOR LEVEL.
 - 6 MUNICIPAL WATER SERVICE LINE IN
 - 7 SANITARY WASTE LINE OUT
 - 8 LINE OF BALCONY ABOVE
 - 9 1-HR RATED DOOR
 - 10 FAUX WOOD ACCENT PANELS ON WALL
 - 11 STRUCTURAL COLUMNS @ 2ND FLOOR PERIMETER
 - 12 LINE OF CANOPY ABOVE

LEGEND

1 HOUR RATED AREA

AREA CALCULATIONS: OPT. 02

FIRST FLOOR:	1,083 SQ. FT
SECOND FLOOR (W/ BALCONY):	1,690 SQ. FT
THIRD FLOOR (W/ BALCONY):	1,690 SQ. FT



C:\Users\Greg Simon\Documents\1230A\2023-04 Quate Duplex-106 85th St\Revit files\2023-04_85th Street Duplex_FLIP KITCH - STUCCO-WORKING.rvt



NEW WORK NOTES -OPT. 02

SECOND FLOOR

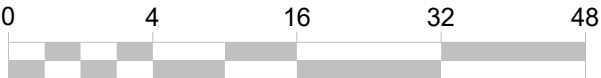
- 1 7'-0" X 3' KITCHEN ISLAND WITH BASE CABINETS AND BAR SEATING
- 2 36" X 36" SHOWER
- 3 PRE-FINISHED METAL RAILING W/ WOOD CAP. (PROVIDE 'PRIVACY' TYPE PICKETS ON RAIL SYSTEM)
- 4 30" X 48" SHOWER W/ SLIDING GLASS DOOR
- 5 1-HR RATED WALL PARTITION (TYP. AROUND 1-HR RATED SPACES.)
- 6 FULL HEIGHT PANTRY STORAGE
- 7 CANOPY OVER GARAGE DOORS & ENTRY AREA
- 8 VANITY SINK CABINET (LENGTH INDICATED @ EACH)
- 9 1-HR RATED DOOR
- 10 STACKABLE WASHER & DRYER
- 11 36" VANITY SINK WITH COUNTER EXTENSION OVER TOILET
- 12 HVAC RETURN AIR DUCT CHASE DOWN TO UNIT ON 1ST FLOOR. OR UP TO ROOF
- 13 PLUMBING CHASE
- 14 FAUX WOOD ACCENT PANELS ON CEILING @ BALCONY
- 15 12" W X 16" DEEP, FULL HEIGHT BUILT-IN LINEN STORAGE SHELVING
- 16 COMPACT, WALL MOUNTED VANITY SINK BASIN

LEGEND

1-HR RATED SPACE

AREA CALCULATIONS: OPT. 02

FIRST FLOOR:	1,083 SQ. FT
SECOND FLOOR (W/ BALCONY):	1,690 SQ. FT
THIRD FLOOR (W/ BALCONY):	1,690 SQ. FT

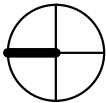


LEVEL 2 OPTION 02

3/16" = 1'-0"

(THIRD FLOOR IS SIMILAR)

NORTH



(THIRD FLOOR IS SIMILAR)

2ND FLOOR PLAN - OPTION 02

A05



OPT-01 EAST



OPT-01 SOUTH






OPT-01 WEST



OPT-01 NORTH

NEW WORK NOTES OPT. 02

- 1 SIDING 01: HORIZONTAL LAP COMPOSITE SIDING

- 2 SIDING 02: COLORED STUCCO FINISH @ FIRST FLOOR LEVEL WITH FAUX WOOD ACCENTS AROUND THE ENTRY

- 3 SECOND AND THIRD FLOORS BOTH HAVE 9'-0" CEILING HEIGHTS
- 4 EXTERIOR SOFFIT LIGHTS ALONG CANOPY LEADING UP TO ENTRY AREA TO PROVIDE A CLEAR PATH TO THE FRONT DOOR AT NIGHT.
- 5 LARGER FORMAT 'PRIVACY' PICKETS ON BALCONY RAILING

